

**SAN FRANCISCO DEPARTMENT OF PUBLIC HEALTH
TARGETED CASE MANAGEMENT**

**MONTHLY REPORT FOR
APRIL AND MAY 2009**

REPORT OVERVIEW

This report describes the Laguna Honda Hospital Targeted Case Management Program updates and analyzes the program's screening, assessment, and discharge data for the months of April and May.

The report provides data analysis related to categories I-IV listed below. Per federal HIPAA requirements, only aggregate data are provided in this report. The report is divided into the following main sections:

- I. TCM Screening**
- II. TCM Assessment**
- III. TCM Program Participation**
- IV. TCM Program Outcomes**

Attachment A: Targeted Case Management Figures (Project-to-Date)

I. SCREENING

The TCM Screening identifies candidates eligible for more intensive assessment by case managers for the purpose of possible transitioning back into the community. The TCM Screening criteria include: Level of Cognitive Skills for Daily Decision-Making; Level of Dressing and Personal Hygiene Ability; Suspected Presence of DD or Mental Illness (PAS/PASSR State screening); Availability of Persons Supportive of Discharge; Preference to Return to the Community; and Projected Duration of Stay at LHH. Screening also helps to determine timeframe for potential discharge of those eligible for TCM.

SCREENING OVERVIEW

Number of Individuals Screened	April + May 2009
Number at LHH	71

II. TCM ASSESSMENT

The next step in the TCM process is completion of the MDS-HC by case managers who more thoroughly assess consumers' eligibility for the TCM program and are better able to project discharge timeframes following assessment. Those residents then enter the TCM Program provided they are within 180 days of discharge. If admitted into TCM, they are assigned a TCM case manager for in-depth discharge planning. If not within the 180 days, they will continue to work with the LHH social work staff who will utilize the Individualized Service/Discharge Plan derived from the MDS-HC in preparation for becoming discharge ready. LHH social workers and TCM case managers will collaborate on those cases. Individuals are also assessed at San Francisco General Hospital for the purposes of diversion from LHH.

Number of Individuals Assessed	April + May 2009
Number at LHH	70
Number at SFGH	150

DEMOGRAPHICS OF SCREENED AND ASSESSED RESIDENTS IN APRIL + MAY 2009

Demographic information for screened and assessed residents is reported below. Demographic information recorded includes age, gender, ethnicity, primary language, marital status and funding source. The total percentages below are calculated from reported information only. Placement staff at SFGH are not subject to the same regulatory requirements as Placement TCM staff at LHH and may not gather the same level of demographic data due to the rapid nature of SFGH diversions.

Age	Screened		Assessed	
	April + May 2009	PTD	April + May 2009	PTD
	n = 78	n = 2,541	n = 79	n = 2,303
Under 40	9%	4%	9%	4%
40-49	12%	8%	11%	8%
50-59	18%	18%	18%	18%
60 and Older	61%	69%	62%	71%

Gender	Screened		Assessed	
	April + May 2009	PTD	April + May 2009	PTD
	n = 78	n = 2,497	n = 79	n = 2,286
Male	54%	56%	55%	55%
Female	46%	44%	45%	45%

Ethnicity (can report multiple)	Screened		Assessed	
	April + May 2009	PTD	April + May 2009	PTD
	n = 83	n = 2,621	n = 78	n = 2,413
American Indian, Alaskan Native	0%	0%	0%	0%
Asian	16%	20%	17%	20%
African American	24%	26%	24%	25%
Native Hawaiian, Pacific Islander	3%	3%	3%	3%
White	40%	39%	39%	39%
Hispanic or Latino	18%	12%	18%	12%

Primary Language	Screened		Assessed	
	April + May 2009	PTD	April + May 2009	PTD
	n = 78	N = 2,433	n = 79	n = 2,227
English	82%	75%	81%	74%
Spanish	9%	7%	9%	7%
French	0%	0%	0%	0%
Cantonese	8%	9%	9%	9%
Korean	0%	0%	0%	0%
Vietnamese	0%	0%	0%	0%
Russian	0%	1%	0%	1%
Other	1%	8%	1%	8%

III. TCM PROGRAM PARTICIPATION

Once accepted into the TCM program, each client is assigned a case manager who provides discharge planning with the resident, makes referrals, and follows their success in the community for a period of time after discharge.

Number of April + May TCM Encounters	Billable	Not Billable
Number of TCM Encounters	241	87

IV. TCM PROGRAM OUTCOMES

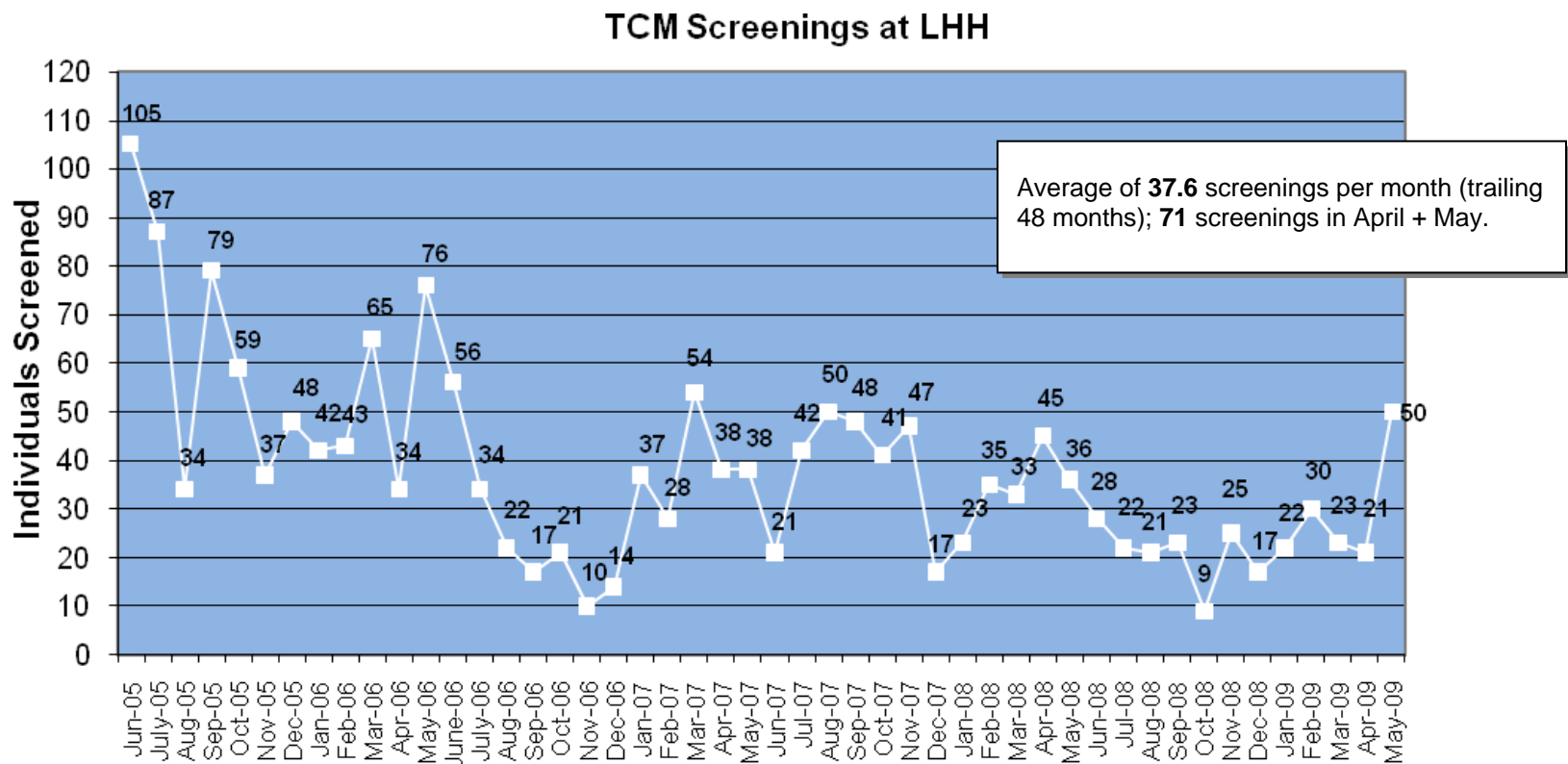
TCM Program Outcomes, the numbers of individuals discharged, are recorded below.

Discharge Overview

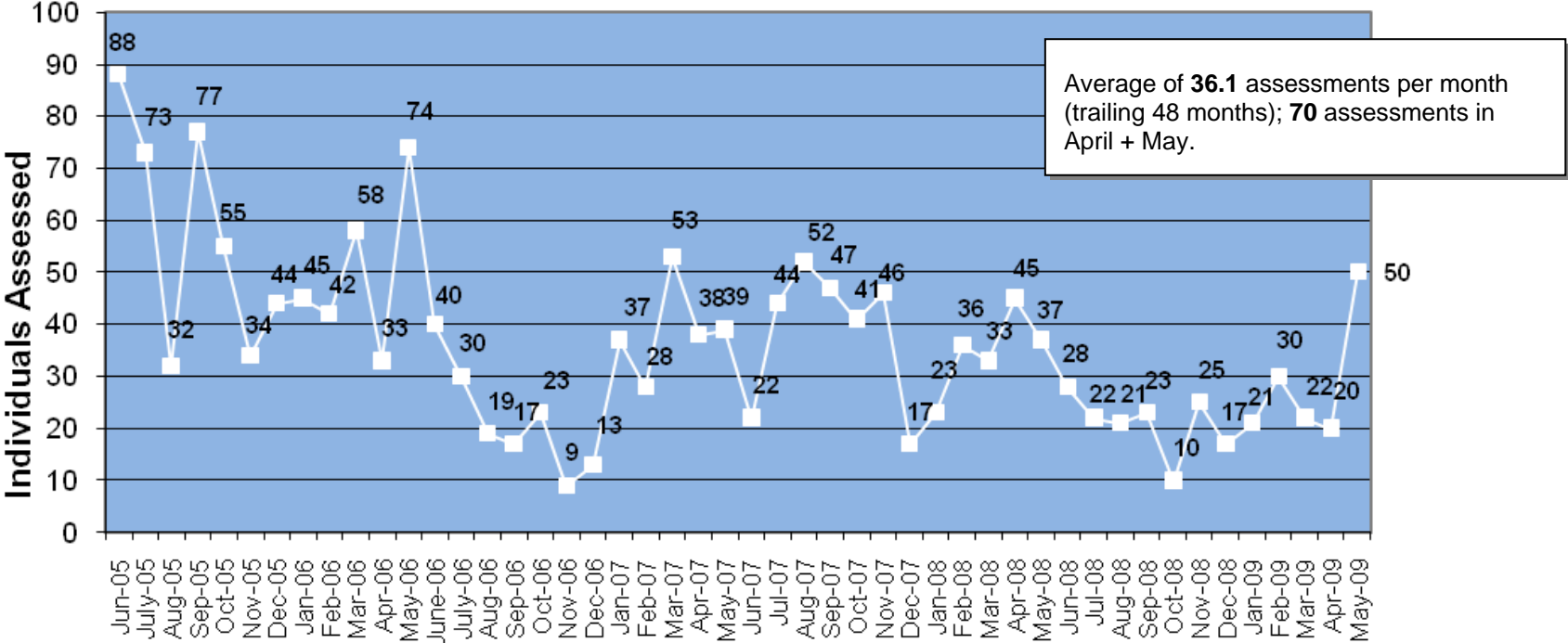
“Discharged to” location for TCM clients discharged in April + May 2009	#	%
House / Apartment	2	40%
Board & Care	2	40%
Hotel/SRO	1	20

Total Number of TCM Clients Discharged from LHH by TCM in April + May 2009	5
--	---

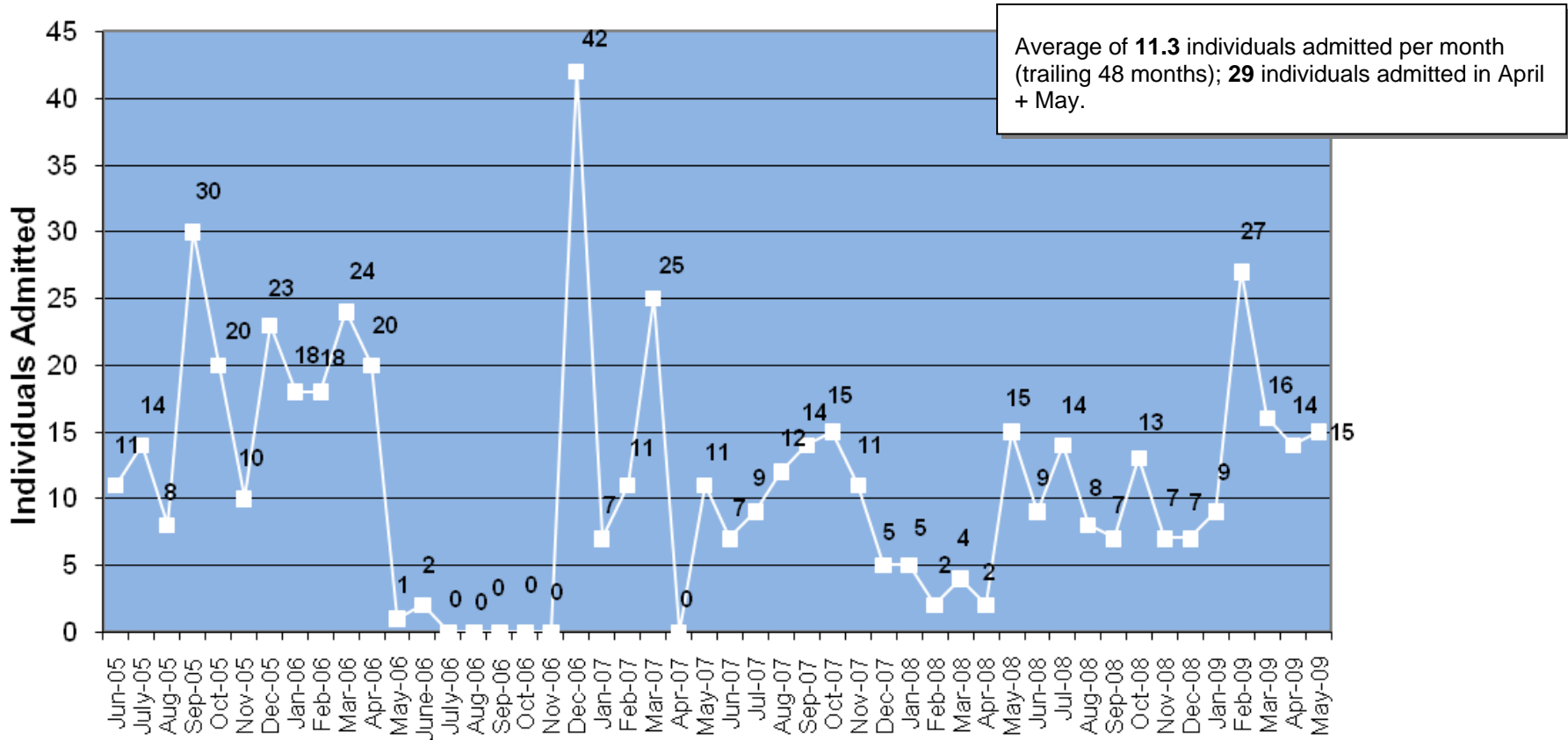
ATTACHMENT A: TRAILING 48-MONTH TCM DATA



TCM Assessments at LHH



TCM Enrollment



TCM-Enrolled Residents Discharged from LHH

